



- **Centralized security and network management**
- **Sophisticated VPN deployment and configuration**
- **Active device monitoring and alerting**
- **Centralized logging**
- **Intelligent reporting and activity visualization**
- **Offline management**
- **Streamlined license manager**
- **SNMP support**

The SonicWALL® Global Management System (GMS) provides organizations, distributed enterprises and service providers with a flexible, powerful and intuitive solution to centrally manage and rapidly deploy SonicWALL appliances and security policy configurations. SonicWALL GMS™ also provides centralized real-time monitoring, and comprehensive policy and compliance reporting.

SonicWALL GMS' intuitive Web-based user interface easily allows for complete life cycle control of thousands of SonicWALL appliances—from initial configuration to complex policy changes and remote updates. For enterprises, GMS simplifies the complexity of network management by offering a single management interface, thereby reducing administration time, complexity and the overall total cost of ownership (TCO). Service providers benefit from its multi-organizational management capabilities where it consolidates, groups and classifies thousands of individual customers' managed appliances and their respective security policies. Through an integrated reporting architecture, administrators can customize and schedule reports individually tailored to meet the needs of managed customers, executives and regulatory compliance audits for corporate departments.

Features and Benefits

Centralized security and network management is achieved using a flexible, powerful and intuitive tool to deploy, manage and monitor a distributed network environment and set policies from a central location. Administrators can now define, distribute, enforce and deploy a full range of service and security policies for thousands of SonicWALL appliances.

Sophisticated VPN deployment and configuration enables distributed enterprise networks to reduce the administration time, costs and complexity associated with establishing and maintaining corporate security policies, VPN connectivity and network configurations. For Service Providers, it consolidates and unifies all security policies for thousands of customers allowing for greater efficiencies in delivering an SLA.

Active device monitoring and alerting supplies real-time alerts with integrated monitoring capabilities allowing administrators to take preventative action and deliver immediate remediation.

Centralized logging provides a central location for consolidating security events and logs for thousands of appliances, thereby allowing for a single point to conduct network forensics.

Intelligent reporting and activity visualization presents comprehensive management and graphical reports for security devices and user activity yielding greater insight into usage trends and security events. It also enables the customization of these reports using corporate logos and colors, thereby delivering a cohesive branding message to users and customers.

Offline management enables scheduled configurations and/or firmware updates on managed appliances to occur offline to minimize service disruption to end users and customers.

Streamlined license manager displays a unified console for storing, applying, tracking and updating security license information for managed SonicWALL appliances, thereby simplifying the inventory for managing security and support license subscriptions.

SNMP support provides a powerful, real-time alerting mechanism for all TCP/IP and SNMP-enabled devices and applications, thus greatly enhancing the ability to pinpoint and respond to critical network events.

Specifications



SonicWALL Global Management System

Providing a comprehensive security management solution for enterprises and service providers.

SonicWALL GMS Standard Edition

SonicWALL GMS 10 Node Software License
01-SSC-3363

SonicWALL GMS 25 Node Software License
01-SSC-3311

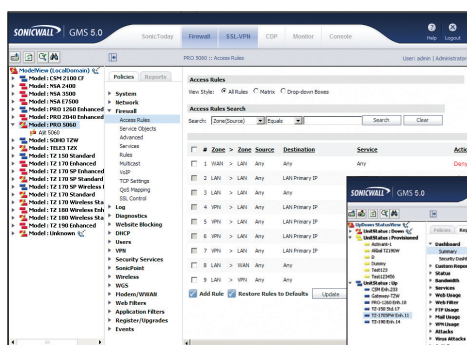
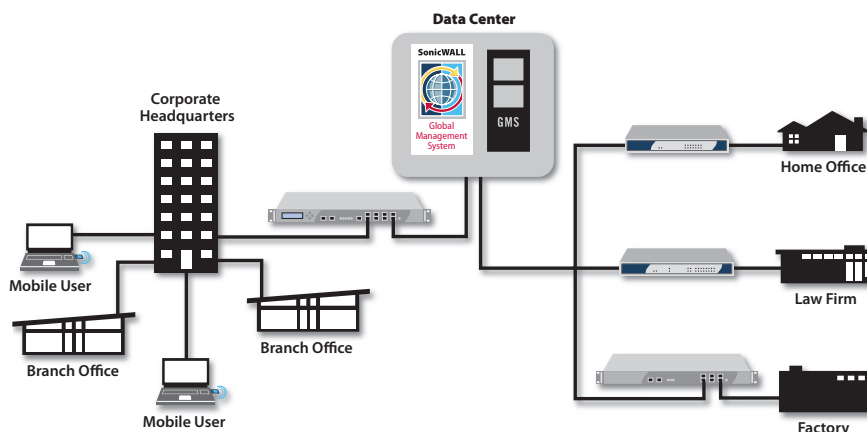
SonicWALL GMS 24x7 Software Support
for 10 Nodes (1-year)*
01-SSC-6514

SonicWALL GMS 24x7 Software Support
for 25 Nodes (1-year)*
01-SSC-3334

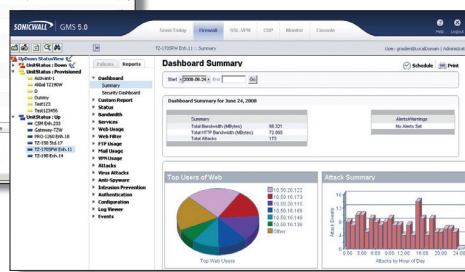
SonicWALL Comprehensive GMS 24x7
Support for 10 Nodes
01-SSC-3353

SonicWALL Comprehensive GMS 24x7
Support for 25 Nodes
01-SSC-3374

*Multi-year SKUs also available.



SonicWALL GMS allows administrators to easily create security policies for the SonicWALL Network Security appliances and enforce them at the global, group or unit level.



SonicWALL GMS allows administrators to generate a wide range of informative and historical reports to provide insight into usage trends, such as which Web sites have been accessed, by whom and security events of the managed SonicWALL Network Security appliances.

Minimum System Requirement

Below are the minimum requirements for SonicWALL GMS with respect to the operating systems, databases, drivers, hardware and SonicWALL supported appliances:

Operating System

Windows 2000 Server (SP4), Windows 2000 Professional (SP4), Windows XP Professional (SP2), Windows 2003 Server (SP2)

Hardware for Single Deployment

x86 Environment: Minimum 3 GHz processor Server dual-core CPU Intel processor, 2 GB RAM and 300 GB disk space

Hardware for Distributed Server Deployment

GMS Server x86 Environment: Minimum 3 GHz processor single-CPU Intel processor, 2 GB RAM and 300 GB disk space

Database Server x86 Environment: Minimum 3 GHz processor dual-core CPU Intel processor, 2 GB RAM and 300 GB disk space

GMS Gateway

SonicWALL PRO Series Network Security Appliance with minimum firmware, SonicOS Enhanced 3.2 and SonicWALL VPN-based Network Security appliances¹

Database

Microsoft® Environment: Microsoft SQL Server 2000 (SP4) and Microsoft SQL Server 2005 (SP2)² on either Windows 2000 Server (SP4) or 2003 Server (SP2)

Java

Java Plug-in version 1.5 or later

Supported SonicWALL Appliances Managed by GMS

SonicWALL Network Security appliances: E-Class NSA, NSA, PRO Series, TZ Series appliances

SonicWALL Continuous Data Protection appliances

SonicWALL CSM appliances, SonicWALL SSL-VPN appliances

All TCP/IP and SNMP-enabled devices and applications for active monitoring

Internet Browsers

Microsoft® Internet Explorer 6.0 or higher

Mozilla Firefox 2.0 or higher

Supported Firmware

SonicWALL Network Security appliances: E-Class NSA and NSA SonicOS Enhanced 5.0 or higher

SonicWALL PRO Series appliances: SonicOS Enhanced 3.2 or higher

SonicWALL TZ Series appliances: SonicOS Standard 3.1 or higher and SonicOS Enhanced 3.2 or higher

SonicWALL CDP appliances: SonicWALL CDP 2.3 or higher

SonicWALL CSM appliances: SonicWALL 2.0 or higher

SonicWALL SSL VPN appliances: SonicWALL SSL VPN SMB Firmware 2.0 or higher and SonicWALL Aventail E-Class SSL VPN Firmware 9.0 or higher

¹ The GMS Gateway should have at minimum a SonicWALL PRO 2040 Network Security appliance or higher.

² MySQL database is bundled with the GMS application.

SonicWALL, Inc.

1143 Borregas Avenue
Sunnyvale CA 94089-1306

T +1 408.745.9600
F +1 408.745.9300

www.sonicwall.com



PROTECTION AT THE SPEED OF BUSINESS®