



SonicWALL TZ Series

FIREWALL

Unified Threat Management Firewall

- **Unified Threat Management**
- **SonicWALL Reassembly-Free Deep Packet Inspection**
- **Application intelligence and control**
- **Uncompromising performance**
- **SonicWALL Comprehensive Anti-Spam Service**
- **Modular 3G wireless broadband and analog modem**
- **Secure 802.11b/g/n Wireless LAN**
- **Advanced IPSec and SSL VPN**
- **SonicWALL PortShield**
- **Automated failover and failback and multi-WAN**
- **Robust Voice and Video over IP**
- **Intuitive configuration wizards**
- **SonicWALL Global Management System**

Factors like Web 2.0 applications, streaming video, evolving threats and new threat delivery vectors are overwhelming both the security and performance of traditional firewalls. The stateful packet inspection firewalls installed over the years by many organizations are unable to detect malware embedded in network traffic, nor are they able to identify and control applications being used on the network.

By integrating gateway anti-virus, anti-spyware, intrusion prevention, content filtering, anti-spam and application control, the SonicWALL® TZ Series of Unified Threat Management (UTM) Firewalls shatters these limitations by offering high performance multi-layered network protection. SonicWALL Application Intelligence and Control helps administrators control and manage both business and non-business related applications to enable network and user productivity. Utilizing SonicWALL's unique Reassembly-Free Deep Packet Inspection™ (RFDPI) technology,* the TZ Series delivers in-depth protection at unparalleled performance. The TZ Series also provides IPSec and SSL VPN remote access, VoIP, and 802.11b/g/n wireless, and 3G wireless multi-WAN connectivity. Designed for the needs of small businesses, branch offices, distributed enterprise sites, retailers and managed service providers, the TZ Series supports the highest speeds available from modern ISPs while delivering full UTM protection. Each TZ appliance is available as a SonicWALL TotalSecure™ solution, conveniently bundling all hardware and services needed for comprehensive protection.

Features and Benefits

Unified Threat Management (UTM) delivers real-time gateway protection against the latest viruses, spyware, intrusions, software vulnerabilities and other malicious code.

SonicWALL Reassembly-Free Deep Packet Inspection provides enterprise-class protection for any protocol including Web traffic, email, compressed file transfers, IM and P2P.

Application intelligence and control provides granular control and real-time visualization of applications to guarantee bandwidth prioritization and ensure maximum network security and productivity.**

Uncompromising performance even while providing comprehensive packet level inspection of both inbound and outbound traffic for any file size, while adding near zero latency.

SonicWALL Comprehensive Anti-Spam Service utilizes real-time sender IP reputation analysis and cloud-based Advanced Content Management techniques to remove spam, phishing and virus-laden messages from inbound SMTP-based emails before they reach your network.

Modular 3G wireless broadband and analog modem support can be used as either a primary or secondary WAN connection for business continuity or rapid deployment in remote locations.

Secure 802.11b/g/n Wireless LAN (WLAN) technologies provide secure high-speed wireless connectivity with SonicWALL's wireless security enforcement for multiple virtual SSIDs.

Advanced IPSec and SSL VPN connectivity options provide secure, high-speed office-to-office and individual user remote access.

SonicWALL PortShield port-level security offers flexible protection for traffic on the WAN, DMZ and devices inside your network by easily grouping ports into logical units.

Automated failover and failback and multi-WAN capabilities ensure continuous uptime for WAN connections including VPN tunnels by diverting traffic over alternate 3G WWAN or Ethernet WAN connections in the event of primary connection failure.

Robust Voice and Video over IP (VoIP) capabilities offer secure, standards-based support for sending voice (audio), streaming video and other media over IP-based networks.

Intuitive configuration wizards simplify even the most complicated tasks, including VPN set-up, NAT configuration and public server configuration.

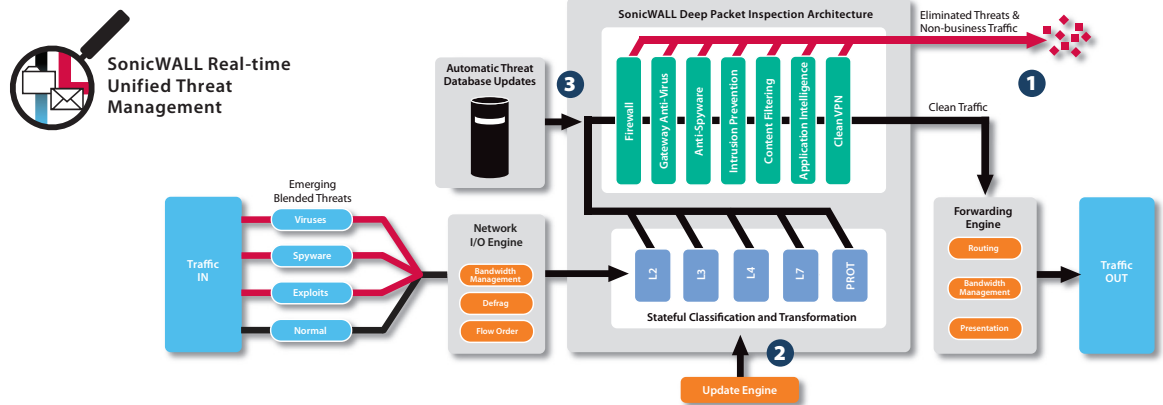
SonicWALL Global Management System (GMS®) provides comprehensive global management and reporting tools for simplified configuration, enforcement and management from a central location.

* U.S. Patent 7,310,815-A method and apparatus for data stream analysis and blocking.

** Available as an option only on the TZ 210 Series



DYNAMIC SECURITY FOR THE GLOBAL NETWORK™



SonicWALL's

**TZ Series is the
ultimate security**

platform for

distributed

and small

networks,

including remote

and branch

offices and

retail/POS

deployments

Best-in-Class Threat Protection

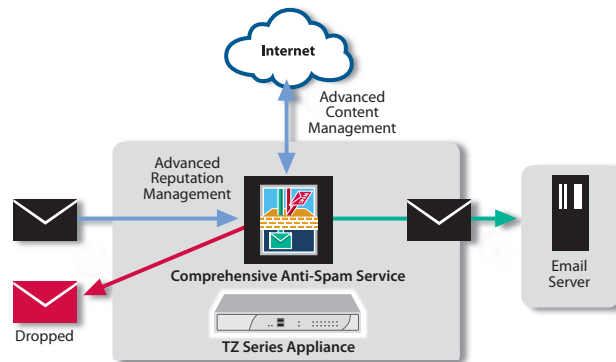
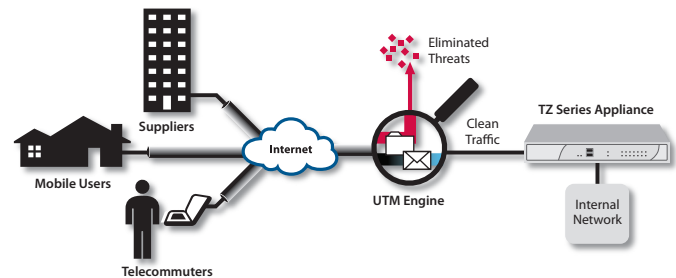
- 1 SonicWALL deep packet inspection protects against network risks such as viruses, worms, Trojans, spyware, phishing attacks, emerging threats and Internet misuse. Application intelligence and control adds highly-configurable controls to prevent data leakage and manage bandwidth at the application level and real-time application visualization.
- 2 The SonicWALL Reassembly-Free Deep Packet Inspection engine comprehensively scans entire

packets in real-time without stalling traffic in memory. This functionality allows threats to be identified and eliminated over unlimited file sizes and unrestricted concurrent connections, without interruption.

- 3 The TZ Series provides dynamic network protection through continuous, automated security updates, protecting against emerging and evolving threats without requiring any administrator intervention.

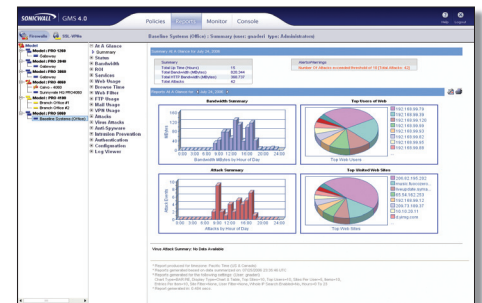
SonicWALL Clean VPN

The TZ Series includes innovative SonicWALL Clean VPN™ technology that protects against vulnerabilities and decontaminates malicious code in traffic from remote users, mobile users and branch offices before it enters the corporate network, all without user intervention. The TZ Series supports both IPSec and SSL VPN termination.



SonicWALL Comprehensive Anti-Spam Service (CASS)

offers small- to medium-sized businesses comprehensive protection from spam and viruses, with instant deployment over existing SonicWALL firewalls. CASS speeds deployment, eases administration and reduces overhead by consolidating solutions, providing one-click anti-spam services, with advanced configuration in just ten minutes. CASS features complete inbound anti-spam, anti-phishing, anti-malware, GRID Network IP Reputation, Advanced Content Management, Denial of Service prevention, full quarantine and customizable per-user junk summaries. Outperforming RBL filtering, CASS offers >98% effectiveness against spam, dropping >80% of spam at the gateway, and advanced anti-spam techniques like Adversarial Bayesian™ filtering on remaining email.



Centralized Policy Management

The TZ Series can be managed using the SonicWALL Global Management System, which provides flexible, powerful and intuitive tools to manage configurations, view real-time monitoring metrics and integrate policy and compliance reporting, all from a central location.

Deployments

Home Office/Small Office

Designed as a complete Unified Threat Management (UTM) platform delivering business-class protection to home office networks, the TZ Series features PortShield technology, which provides secure segmentation of the home network from "work" equipment.

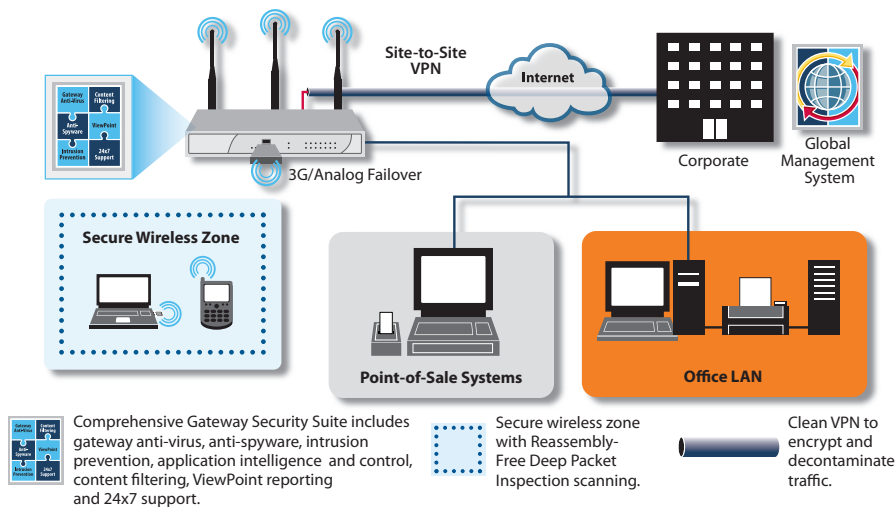
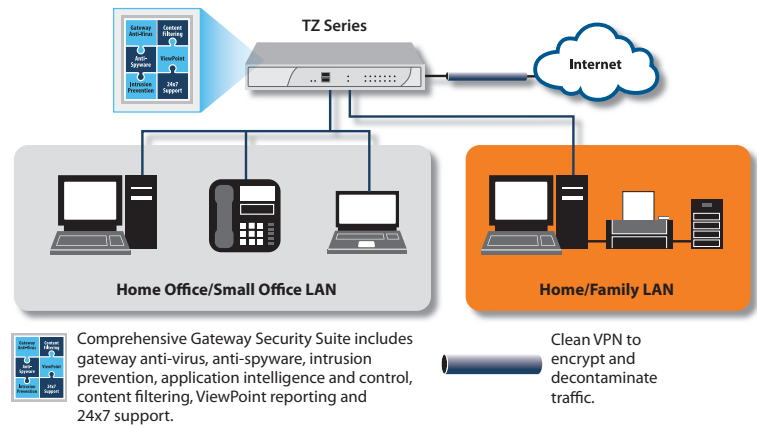
Technologies utilized:

- Unified Threat Management (Gateway Anti-Virus, Anti-Spyware, Intrusion Prevention, Application Intelligence and Control, Anti-Spam, Content Filtering, and Enforced Client Anti-Virus and Anti-Spyware)
- PortShield
- SSL VPN and IPSec VPN
- Optional 802.11n Clean Wireless

TZ 100

TZ 200

TZ 210



Small Office/Retail

The TZ Series is a high-performance security platform for small professional offices and retail deployments with mission-critical needs. The TZ 200 and TZ 210 Series feature 3G connectivity through an integrated USB slot for use as either the primary or backup WAN connection.

Technologies utilized:

- Unified Threat Management (Gateway Anti-Virus, Anti-Spyware, Intrusion Prevention, Application Intelligence and Control, Anti-Spam, Content Filtering, and Enforced Client Anti-Virus and Anti-Spyware)
- 3G failover
- WAN and VPN failover
- PortShield
- 802.11n Clean Wireless
- Global Management System
- Virtual Access Points (VAPs)

TZ 100

TZ 200

TZ 210

Remote/Branch Office

The TZ 200 and TZ 210 Series are the fastest multi-layered network security solutions in their class, giving remote and branch offices unparalleled Unified Threat Management protection against continually evolving threats. PortShield offers network segmentation, while Application Intelligence Service on the TZ 210 provides application classification and policy management to control applications. Get security and segmentation, along with performance and reliability.

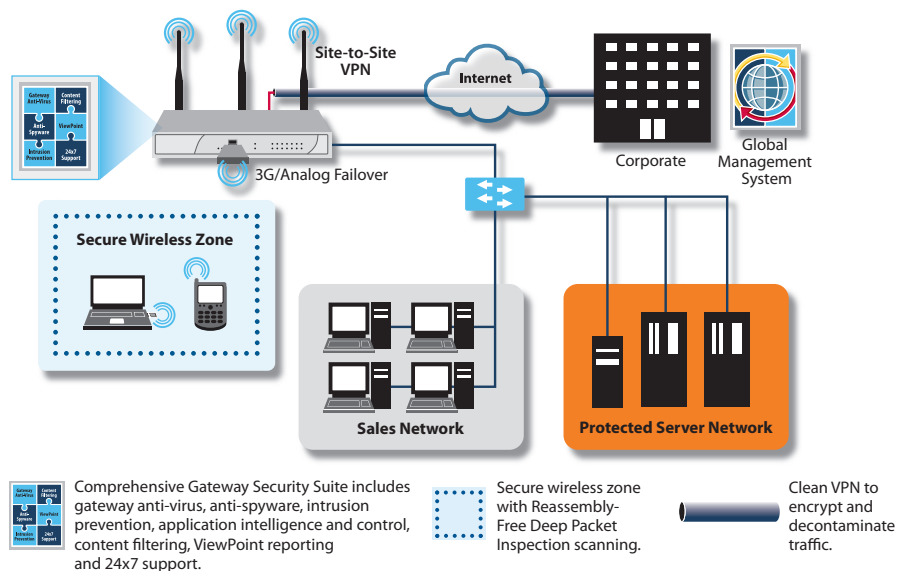
Technologies utilized:

- Unified Threat Management (Gateway Anti-Virus, Anti-Spyware, Intrusion Prevention, Application Intelligence and Control, Anti-Spam, Content Filtering, and Enforced Client Anti-Virus and Anti-Spyware)
- Comprehensive Anti-Spam Service
- SSL VPN and IPSec VPN
- 802.11n Clean Wireless
- Optional hardware failover
- Global Management System

TZ 100

TZ 200

TZ 210



Specifications



SonicWALL TZ 100
01-SSC-8734

SonicWALL TZ 100 Wireless-N
01-SSC-8735 (US/Canada)

SonicWALL TZ 100 TotalSecure*
01-SSC-8739

SonicWALL TZ 100 Wireless-N
TotalSecure* 01-SSC-8723
(US/Canada)



SonicWALL TZ 200
01-SSC-8741

SonicWALL TZ 200 Wireless-N
01-SSC-8742 (US/Canada)

SonicWALL TZ 200 TotalSecure*
01-SSC-8746

SonicWALL TZ 200 Wireless-N
TotalSecure* 01-SSC-8715
(US/Canada)



SonicWALL TZ 210
01-SSC-8753

SonicWALL TZ 210 Wireless-N
01-SSC-8754 (US/Canada)

SonicWALL TZ 210 TotalSecure*
01-SSC-8769

SonicWALL TZ 210 Wireless-N
TotalSecure* 01-SSC-8773
(US/Canada)

*Includes one-year of Gateway
Anti-Virus, Anti-Spyware, Intrusion
Prevention, Application Intelligence
(TZ 210 Series) Service, Content
Filtering Service, Dynamic Support
24x7 and ViewPoint Reporting.

Certifications



SonicWALL, Inc.

2001 Logic Drive, San Jose, CA 95124

T +1 408.745.9600 F +1 408.745.9300

www.sonicwall.com

Firewall	TZ 100 Series	TZ 200 Series	TZ 210 Series
SonicOS Version		SonicOS 5.6 and later	
Stateful Throughput¹	100 Mbps	100 Mbps	200 Mbps
GAV Throughput²	35 Mbps	50 Mbps	70 Mbps
IPS Throughput²	50 Mbps	70 Mbps	110 Mbps
UTM Throughput²	25 Mbps	35 Mbps	50 Mbps
IMIX Throughput²	40 Mbps	50 Mbps	110 Mbps
Maximum Connections³	6,000	12,000	30,000
Maximum UTM Connections	6,000	12,000	20,000
New Connections/Sec	1,000	1,000	1,500
Nodes Supported	Unrestricted		
Denial of Service Attack Protection	22 classes of DoS, DDoS and scanning attacks		
SonicPoints Supported	1	2	16
VPN	TZ 100 Series	TZ 200 Series	TZ 210 Series
3DES/AES Throughput⁴	75 Mbps		
Site-to-Site VPN Tunnels	5	10	15
Bundled GVC Licenses (Maximum)	0 (5)	2 (10)	2 (25)
Bundled SSL VPN Licenses (Maximum)	1 (5)	1 (10)	2 (10)
Encryption/Authentication/DH Group	DES, 3DES, AES (128, 142, 256-bit), MD5, SHA-1/DH Group 1, 2, 5, 14		
Virtual Assist Bundled (Maximum)	–	30-day trial (1)	30-day trial (2)
Key Exchange	IKE, Manual Key, Certificates (X.509), L2TP over IPSec		
Certificate Support	Verisign, Thawte, Cybertrust, RSA Keon, Entrust and Microsoft CA for SonicWALL-to-SonicWALL VPN, SCEP		
VPN Features	Dead Peer Detection, DHCP Over VPN, IPSec NAT Traversal, Redundant VPN Gateway, Route-based VPN		
Global VPN Client Platforms Supported	Microsoft® Windows 2000, Windows XP, Vista 32/64-bit, Windows 7 32/64-bit		
SSL VPN Platforms	Microsoft Windows 2000/ XP/ Vista 32/64-bit / Windows 7, Mac OSX 10.4+, Linux FC3+/ Ubuntu 7+/ OpenSUSE		
Security Services	TZ 100 Series	TZ 200 Series	TZ 210 Series
Deep Packet Inspection Services	Gateway Anti-Virus, Anti-Spyware and Intrusion Prevention		
Content Filtering Service (CFS)	HTTP URL, HTTPS IP, keyword and content scanning, ActiveX, Java Applet, and cookie blocking, bandwidth management on filtering categories, allow/forbid lists		
Enforced Client Anti-Virus and Anti-Spyware	HTTP/S, SMTP, POP3, IMAP and FTP, Enforced McAfee™ Client Email attachment blocking		
Comprehensive Anti-Spam Service⁵	Supported		
Application Intelligence and Control	–	–	Supported
Networking	TZ 100 Series	TZ 200 Series	TZ 210 Series
IP Address Assignment	Static, (DHCP, PPPoE, L2TP and PPTP client), Internal DHCP server, DHCP relay		
NAT Modes	1:1, 1:many, many:1, many:many, flexible NAT (overlapping IPs), PAT, transparent mode		
VLANS	5, PortShield	10, PortShield	10, PortShield
DHCP	Internal server, relay		
Routing	RIPv1/v2 advertisement, static routes	OSPF, RIP v1/v2, static routes, policy-based routing, multicast	
Authentication	XAUTH/RADIUS, Active Directory, SSO, LDAP, Novell, internal user database		
Local User Database	25 users	100 users	150 users
VoIP	Full H.323v1-5, SIP, gatekeeper support, outbound bandwidth management, VoIP over WLAN, deep inspection security, full interoperability with most VoIP gateway and communications devices		
System	TZ 100 Series	TZ 200 Series	TZ 210 Series
Zone Security	Yes	Yes	Yes
Schedules	Yes	Yes	Yes
Object-based/Group-based Management	Yes	Yes	Yes
DDNS	Dynamic DNS providers include: dyndns.org, yi.org, no-ip.com and changeip.com		
Management and Monitoring	Local CLI, Web GUI (HTTP, HTTPS), SNMP v2; Global management with SonicWALL GMS		
Logging and Reporting	ViewPoint, Local Log, Syslog, Solera Networks, NetFlow v5/v9, IPFIX with Extensions, Real-time Visualization⁶		
Hardware Failover	–	Active/Passive	Active/Passive
Anti-Spam	RBL support, Allowed/Blocked Lists, Optional SonicWALL Comprehensive Anti-Spam Service⁵		
Load Balancing	Yes, Outgoing and Incoming⁶		
Standards	TCP/IP, UDP, ICMP, HTTP, HTTPS, IPSec, ISAKMP/IKE, SNMP, DHCP, PPPoE, L2TP, PPTP, RADIUS, IEEE 802.3		
Built-in Wireless LAN	TZ 100 Series	TZ 200 Series	TZ 210 Series
Standards	802.11b/g/n (WEP, WPA, WPA2, 802.11i, TKIP, PSK, QoS, EAP-PEAP, EAP-TTLS)		
Virtual Access Points (VAPs)⁷	Up to 8 for all appliances		
Antennas (5 dBi Diversity)	Dual, detachable, external		Triple, detachable, external
Radio Power			
802.11b	18 dBm maximum		
802.11g	18 dBm @ 6–48 Mbps 14 dBm @ 54 Mbps		
802.11n	19 dBm MCS 0, 12 dBm MCS 15		
Radio Receive Sensitivity			
802.11b	–90 dBm @ 11Mbps		
802.11g	–91 dBm @ 6Mbps, –74 dBm @ 54 Mbps		
802.11n	–89 dBm MCS 0, –70 dBm MCS 15		
Hardware	TZ 100 Series	TZ 200 Series	TZ 210 Series
Interfaces	(5) 10/100	(5) 10/100	(2) 10/100/1000, (5) 10/100
Flash Memory/RAM	16 MB/128 MB	16 MB/256 MB	32 MB/256 MB
3G Wireless/Modem⁸	–	Supported with approved adaptors	Supported with approved adaptors
USB Ports	–	1	2
Power Input	100 to 240 VAC, 50–60 Hz, 1 A		
Max Power Consumption	7.5 W/9.5 W (TZ 100 W)	8.6 W/10.6 W (TZ 200 W)	9.4 W/11.7 W (TZ 210 W)
Total Heat Dissipation	26 BTU/33 BTU (TZ 100 W)	30 BTU/37 BTU (TZ 200 W)	32 BTU/40 BTU (TZ 210 W)
Certifications	Common Criteria EAL4+, VPNC		
Certifications (Pending)	ICSA Firewall 4.1, FIPS 140-2		
Form Factor and Dimensions	6.30 x 5.63 x 1.46 in (16 x 14.3 x 3.7 cm)	6.30 x 5.63 x 1.46 in (16 x 14.3 x 3.7 cm)	8.9 x 5.9 x 1.9 in (22.5 x 14.9 x 3.6 cm)
Weight	2.0 lbs/0.91 kg 2.5 lbs/1.1 kg (TZ 100 W)	2.0 lbs/0.91 kg 2.5 lbs/1.1 kg (TZ 200 W)	2.0 lbs/0.91 kg 2.8 lbs/1.3 kg (TZ 210 W)
Major Regulatory Compliance	FCC Class B, ICES Class B, CE, C-Tick, VCCI Class B, MIC, NOM, UL, cUL, TUV/GS, CB, WEEE, RoHS		
Environment/Humidity	32–105° F, 0–40° C / 5–95% non-condensing		
MTBF	8 Years Minimum		

¹Testing Methodologies: Maximum performance based on RFC 2544 (for firewall). Actual performance may vary depending on network conditions and activated services. ²UTM/Gateway AV/Anti-Spyware/IPS throughput, measured using industry standard Spirent WebAvalanche HTTP performance test and Ixia test tools. Testing done with multiple flows through multiple port pairs. ³Actual maximum connection counts are lower when UTM services are enabled. ⁴VPN throughput measured using UDP traffic at 1280 byte packet size adhering to RFC 2544. ⁵Supported on the Internal Radio for the TZ 100 W, TZ 200 W and TZ 210 W only. ⁶With SonicOS Enhanced. ⁷3G card and modem are not included. See <http://www.sonicwall.com/us/products/cardsupport.html> for supported USB devices. ⁸The Comprehensive Anti-Spam Service supports an unrestricted number of users but is recommended for 250 users or less. ⁹TZ 100/200 not supported.

SonicWALL's line-up of dynamic security solutions



NETWORK
SECURITY



SECURE
REMOTE ACCESS



WEB AND E-MAIL
SECURITY



BACKUP
AND RECOVERY



POLICY AND
MANAGEMENT



DYNAMIC SECURITY FOR THE GLOBAL NETWORK™